



MASSERIA PALESI
Historic residence in Puglia





RUSTIC ELEGANCE IN THE HEART OF PUGLIA

Set among beautiful ancient woodland and vineyards in the heart of the Valle d'Itria, Masseria Palesi is an historic estate featuring a majestic seventeenth-century manor house.

The venue offers an impressive variety of locations, each magical in its own way. The frescoed interiors, the stunning baroque courtyard, the converted stables, the oak coppice and the panoramic threshing floor.



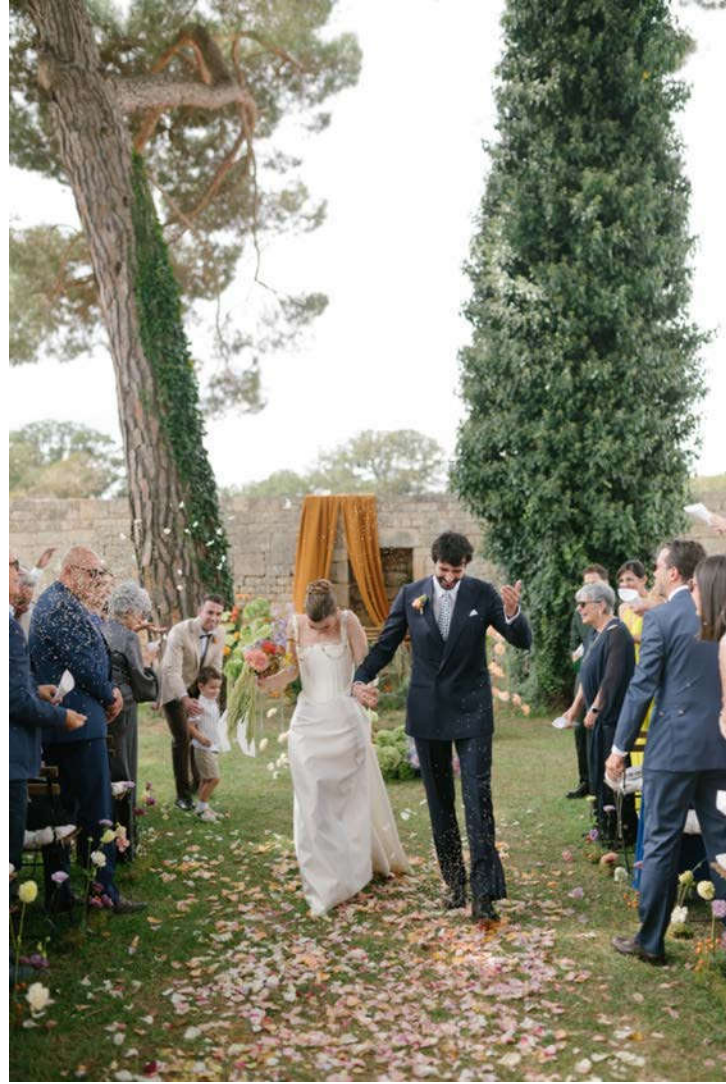


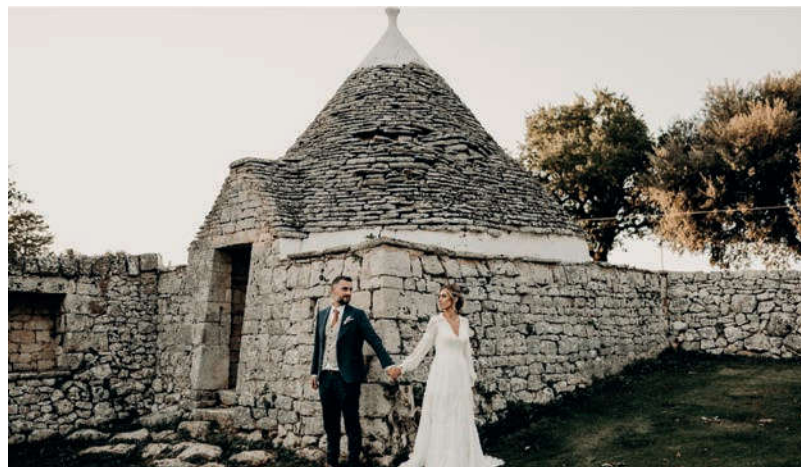
CIVIL CEREMONY

Masseria Palesi is registered as an official venue with the town hall,
so you can hold your civil or symbolic ceremony here.

As the striking backdrop to your vows,
choose from the beautifully frescoed seventeenth-century palazzo,
the sunlit walled garden, the shade of centuries-old trees in
the coppice,
or the trullo area in a courtyard with a lush green lawn,
framed by wonderful oak trees.







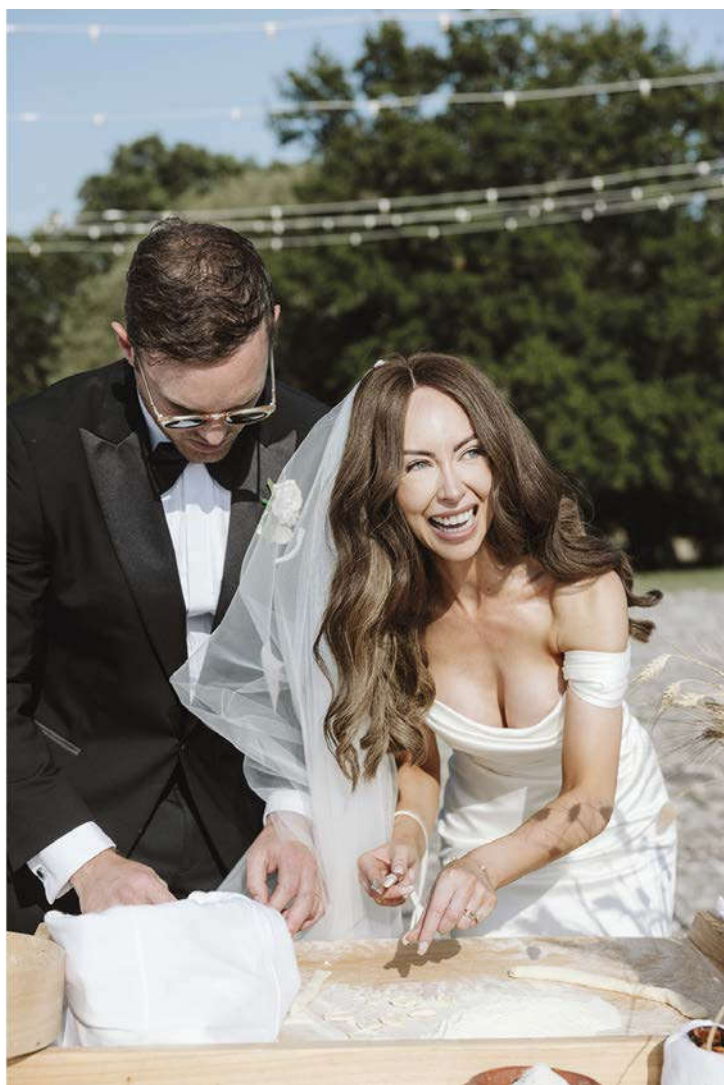




VILLAGE FESTIVAL

Rustic Chic

Your wedding deserves excellent cuisine. You can start your celebration in the farmyard or oak grove with a cheerful, light-hearted country festival accompanied by Apulian specialities cooked and prepared before your eyes, live cooking made in Puglia.







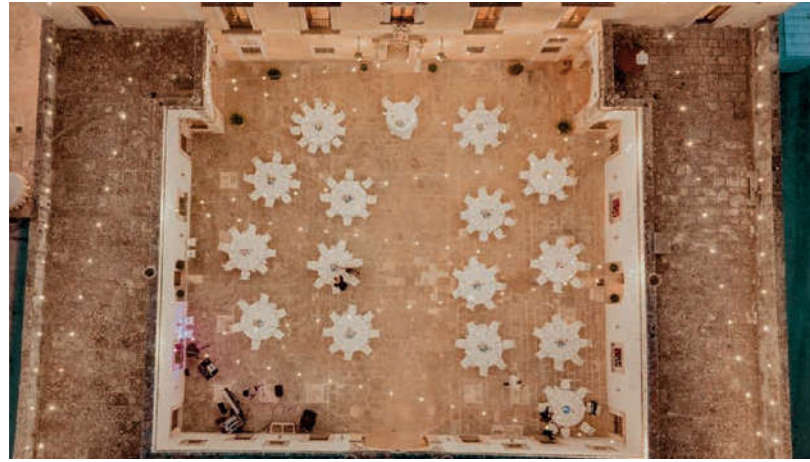


THE COURTYARD

Vintage Elegance

You can dine by candlelight together with your guests, under the stars in the charming Baroque courtyard and experience an intimate and romantic dinner within the walls of the court of the 18th-century palace.

You will choose from different types of mise en place, tables and chairs.









THE NEW COURT







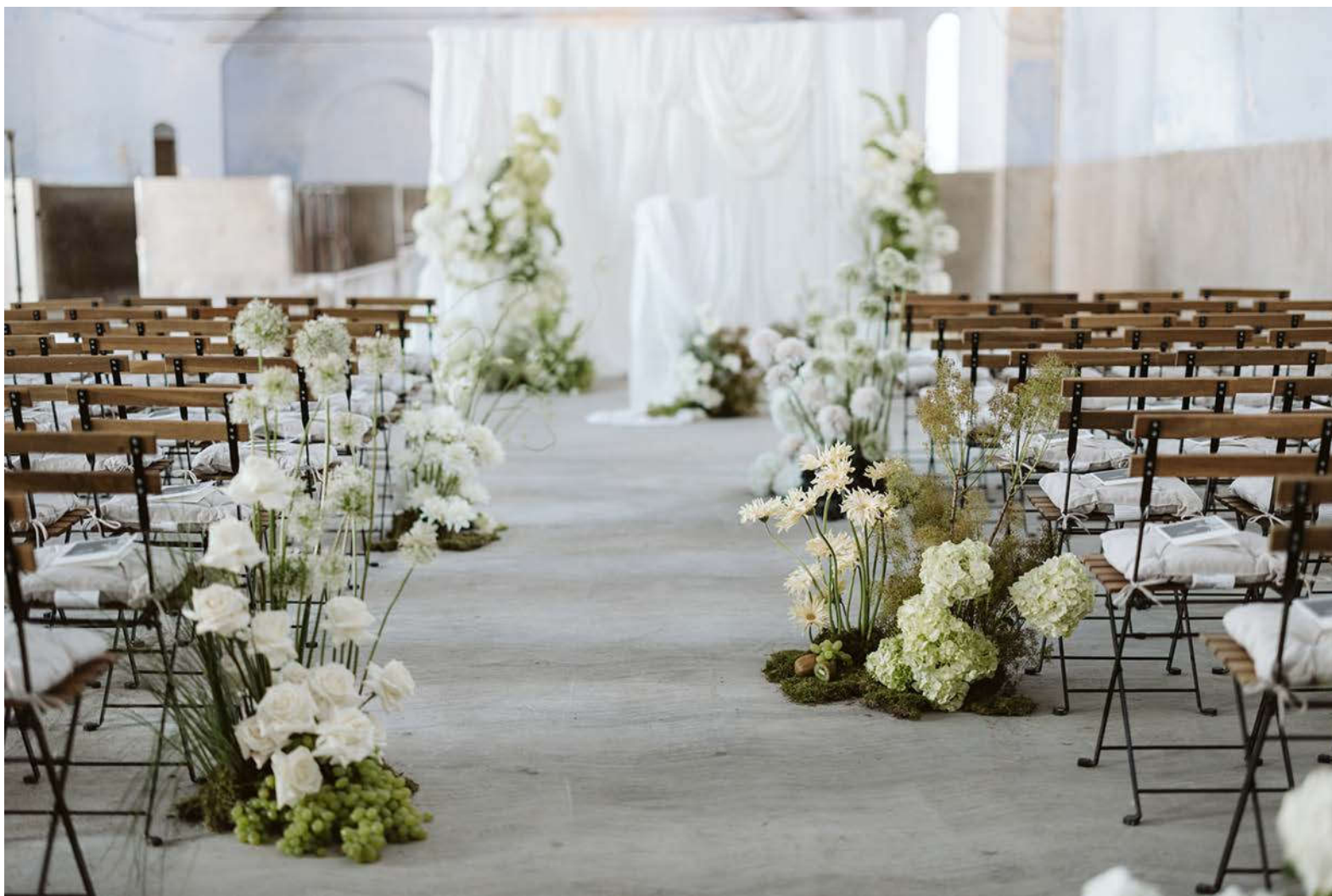
INDOOR SPACES

Eleganza Vintage

The Masseria has ample indoor capacity, with space for around 200 seated guests in the large cowshed, which has been restored to let its original beauty shine, featuring bare bricks and vaulted ceilings. It also has generously-sized frescoed rooms in the baroque palazzo, and a late nineteenth-century milking shed.













WEDDING CAKE & PARTY

Your wedding reception will end on a sweet note, with a tasty array of fine local patisserie and desserts. The wedding cake will be made to your specifications by master pastry chefs, and presented in one of the many beautiful spots around the Masseria. Professional mixologists will wow your guests with a selection of classic and Apulian-inspired cocktails. You can party into the early hours with a DJ set.







ACCOMMODATION

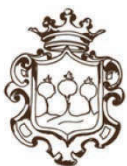
Venue hire includes one night in the bridal suite

In addition to the bridal suite,
the Masseria has one double, one triple and one quadruple
room, to accommodate a total of 13 guests.

You aren't required to occupy all of the rooms,
nor is there a minimum stay.

The venue will be set aside for your exclusive use in
any case. We can offer you, for all other guests,
other beautiful Masserias just a 5-minute drive from Masseria Palesi
with about 50 rooms available for each.





THE VINEYARD

Masseria Palesi,
thanks to its 14 hectares of vineyards,
produces organic wines that
reveal the aromas
of the Itria Valley
and the owners' passion
for this extraordinary territory.







THE VALLE D'ITRIA

Puglia

Masseria Palesi is located in the heart of the Itria Valley, a central area of Puglia, surrounded by historic villages of rare beauty such as:

Martina Franca, Locorotondo, Cisternino, Alberobello, and Ostuni.

A privileged location from which to quickly reach the beaches of the Ionian or Adriatic Sea.

The Itria Valley welcomes visitors with the enchantment of trulli and dry-stone walls, vast expanses of olive trees, and a red earth that inebriates with its scents and marvelous colors.



MARTINA FRANCA

Puglia

Masseria Palesi is in the countryside just outside Martina Franca, a Baroque "pearl" which stands at an altitude of 400 metres above sea level, making it cool and pleasant even on hot summer days. Situated in a rural, inland area of Puglia, this pretty town boasts a rich heritage of cultural, agricultural and culinary traditions. Its whitewashed old town is full of exquisite churches and palazzos in the Baroque style.



HOW TO GET THERE

Masseria Palesi is located in:
Strada vecchia per Crispiano zona F 144/A
Martina Franca(Taranto) 74015

The nearest international airports
are Brindisi-Salento airport BDS (51 km away)
or Bari Karol Wojtyla airport BRI (68 km away).



WE LOOK FORWARD TO SEEING YOU!



+39 3476411984



@masseriapalesi



masseriapalesieventi@gmail.com